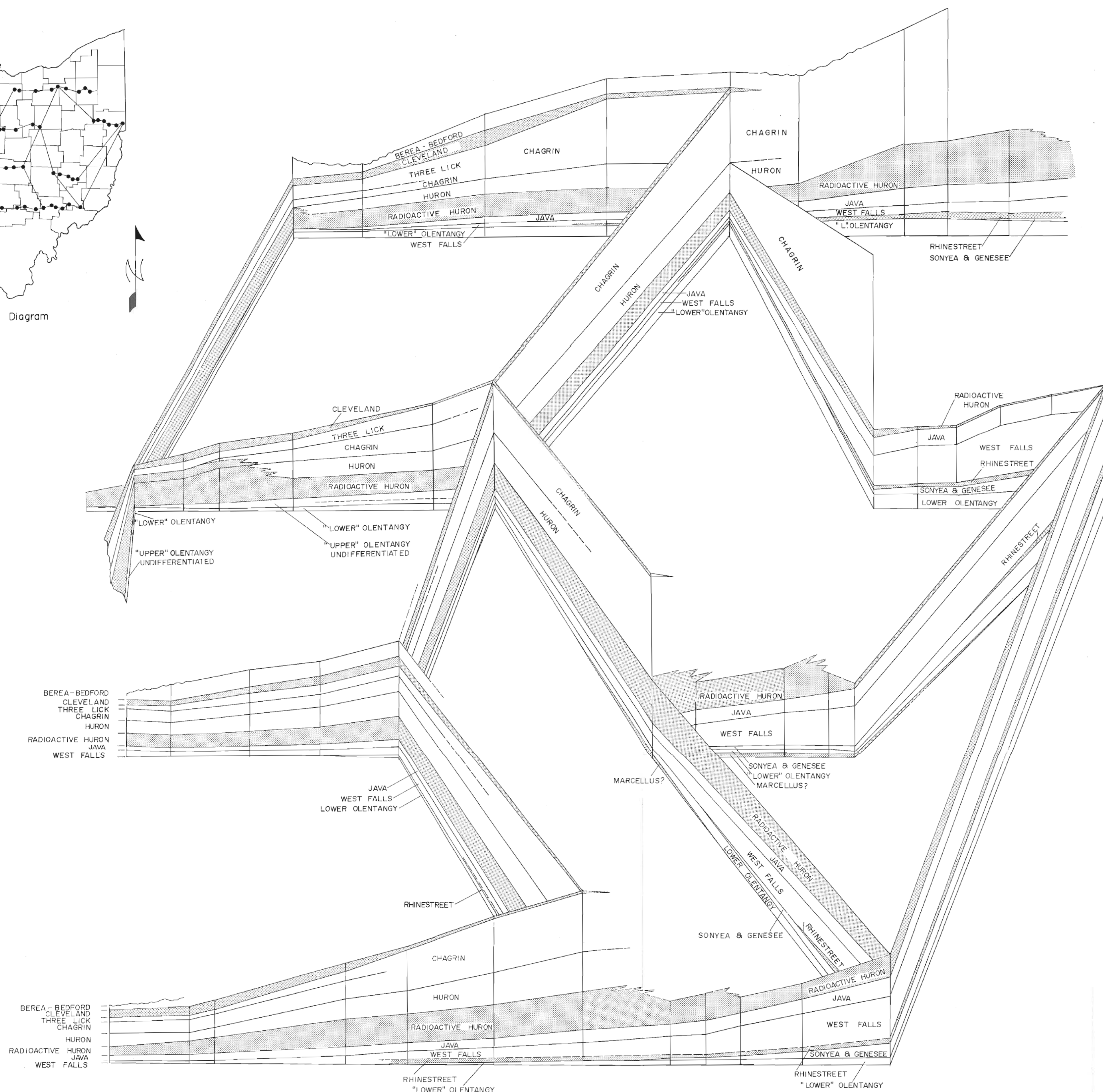


Index to Panel Diagram



#### REFERENCES

Majchszak, F.L., 1980, Borehole geophysical-log correlation network for the Devonian shales in eastern Ohio, U.S. Department of Energy-METC, METC/EGSP Series No. 304-309, 15 sheets.

#### EXPLANATION

Predominantly radioactive shale facies.  
Vertical Scale: 1 inch is equal to approximately 400 feet

TENTATIVE CORRELATION OF ROCK UNITS AND NOMENCLATURE\* USED IN OHIO AND NEW YORK

SYSTEM	OHIO		NEW YORK	
	FORMATION	MEMBER	GROUP OR FORMATION	MEMBER
MISSISSIPPIAN	Sunbury Shale			
	Berea Sandstone			
	Bedford Shale	Cussewago Sandstone		
DEVONIAN	Ohio Shale	Cleveland Shale	Perrysburg Formation	Dunkirk Shale
		Chagrin Shale		
		Huron Shale		
	Olenangy Shale	"Upper" Olenangy	Java Formation	Hanover Shale
			West Falls Formation	Pipe Creek Shale
				Angola Shale
			Sonyea Formation	Rhinestreet Shale
				Cashoga Shale
			Genesee Formation	Middlesex Shale
				West River Shale
				Penn Yan Shale
				Genesee Shale
		"Lower" Olenangy	Hamilton Group	
Middle	Delaware Limestone	Onondaga Limestone (unofficial term)	Onondaga Formation	
	Columbus Limestone			
	Bois Blanc Formation			

\* The nomenclature in this report is that accepted by the Ohio Division of Geological Survey and does not necessarily conform to U.S. Geological Survey usage.

<b>TETRA TECH INC.</b> ENERGY MANAGEMENT DIVISION COLUMBUS, OHIO			
INTEGRATED PROGRAM TO IDENTIFY AND TEST THE NATURAL GAS PRODUCTIVITY OF DEVONIAN SHALE PROSPECTS IN THE APPALACHIAN, MICHIGAN AND ILLINOIS BASINS. FOR UNITED STATES DEPARTMENT OF ENERGY MORRISTOWN ENERGY TECHNOLOGY CENTER			
<b>FENCE DIAGRAM OF THE DEVONIAN SHALES IN EASTERN OHIO.</b>			
PROGRAM MANAGER: E.G. Tarr		CONTRACT NO.	
INTERPRETATION BY: Science Applications, Inc.		MODIFICATION NO.	
DATE: January, 1981	DRAWN BY: L.Y. Clements	DATE	INITIAL
CONTOUR INT:	DATUM:	DWG. NO.	